

# Jack Accessories

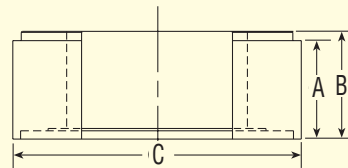
## Cribbing block sets - Includes one jack module extension



For heavy-duty lifting in railroad, construction, mining and industrial applications.

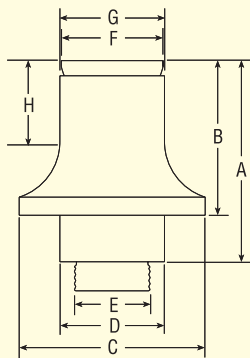


Order No. →	55 Ton		100 Ton		150 Ton	
	CBS55		CBS100		CBS150	
No. in Set	1	4	1	4	1	4
A	1 1/2"	3"	1 1/2"	3"	1 1/2"	3"
B	1 3/4"	3 3/4"	1 3/4"	3 3/4"	1 3/4"	3 3/4"
C	5 1/2"	5 1/2"	7 3/8"	7 3/8"	8 3/4"	8 3/4"
Jack Module Ext.	6 13/16"		7"		6 5/8"	
Total Stack Ht.	20 9/16"		20 1/2"		20 1/8"	
Product Wt. (lbs.)	36		68		85	



- Convert jack module into stable mechanical cribbing device.
- Increase retracted height up to 20 1/2 inches.

## Jack module extensions



Capacity (tons)	Order No.	A (in.)	B (in.)	C (in.)	D (in.)	E (in.)	F (in.)	G (in.)	H (in.)	Prod. Wt. (lbs.)
55	58945	8 13/16	6 13/16	5	2 5/8	1 11/16-8UN	2 1/2	2 5/8	3 5/8	21
100	58943	9	7	6 7/8	3 7/8	2 3/4-12UN	3 3/4	3 7/8	3 3/4	40
150	58944	8 5/8	6 5/8	8	4 1/2	3 1/4-8UNC	4 3/8	4 1/2	3 1/2	50

- Increases jack's reach.
- Swivel cap (5° max.) provides more secure load holding.

## Stressing jack accessories and hoses—ORDERING INFORMATION

Used with Stressing Jack	3" Nose Piece	3" Wedge Seater	6" Nose Piece	6" Wedge Seater	3/8" Diameter Gripper Set	7/16" Diameter Gripper Set	1/2" Diameter Gripper Set	19/32" Diameter Gripper Set	Replacement Gripper Handle	Gripper Retainer Plate (2 used)
SJ2010	252564	252562	252759	252763	252568	252761	252567	NA	252570	252565
SJ2010P	252564	252562	252759	252763	252568	252761	252567	NA	252570	252565
SJ2010DA	252543	252542	252760	252764	252650	252762	252555	NA	252556	252544
SJ3010	252564	252562	252759	252763	252568	252761	252567	252569	252570	252565
SJ3010P	252564	252562	252759	252763	252568	252761	252567	252569	252570	252565
SJ3010DA	253363	253361	253364	253362	253390	NA	253391	253365	252556	252544
No. 9758	Hose - 10 ft. rubber, wire-braid (2-ply, 20,000 psi burst rating) 3/8" NPTF male hose ends									
No. 9763	Hose - 10 ft. rubber, wire-braid (2-ply, 20,000 psi burst rating) 3/8" x 1/4" NPTF male hose ends									

Green tinted blocks indicate parts originally supplied with tool.