

High Tonnage CYLINDERS R SERIES

100-565 Ton
Double-Acting,
Hydraulic-Return

High-tonnage, low cycle,
hydraulic return.

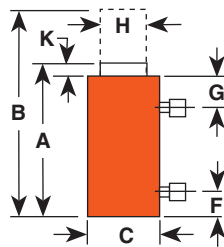


R1502D

- Cylinders come standard with swivel caps to reduce the effects of off-center loading.
- Cylinders may be “dead-ended” without damage.
- Hard chrome plated, heat treated piston rod reduces wear on piston and gland nut.
- Built-in safety relief valve prevents over-pressurization of the retract circuit.
- Each cylinder has two 9796 3/8" NPTF female half couplers.



R2806D



CYLINDERS

Cyl. Cap. (tons)	Order Stroke No. (in.)	Oil Capacity (cu. in.)	Oil Capacity		A Re-tracted Height (in.)	B Ex-tended Height (in.)	C Outside Dia. (in.)	F Base to Port (in.)	G Cylinder Top to Port (in.)	H Piston Rod Dia. (in.)	K Piston Rod Protrusion (in.)	Cylinder			Prod. Wt. (lbs.)	
			Push	Return								Bore Dia. (in.)	Effective Area (sq. in.)	Internal Press. at Cap. (psi)		Tons at 10,000 psi
100	2	R1002D	41.2	19.2	6 ⁴¹ / ₆₄	8 ⁴¹ / ₆₄	6 ¹ / ₂	1	2 ¹³ / ₆₄	3 ³ / ₄	9 ⁹ / ₃₂	5 ¹ / ₈	20.60	9,695	103.0	54
100	6	R1006D	123.6	57.6	10 ⁴¹ / ₆₄	16 ⁴¹ / ₆₄	6 ¹ / ₂₁	1	2 ¹³ / ₆₄	3 ³ / ₄	9 ⁹ / ₃₂	5 ¹ / ₈	20.60	9,695	103.0	81
100	10	R10010D	206.0	96.0	14 ⁴¹ / ₆₄	24 ⁴¹ / ₆₄	6 ¹ / ₂	1	2 ¹³ / ₆₄	3 ³ / ₄	9 ⁹ / ₃₂	5 ¹ / ₈	20.60	9,695	103.0	108
150	2	R1502D	61.4	29.6	7 ⁷ / ₁₆	9 ⁷ / ₁₆	8 ¹ / ₁₆	1 ¹ / ₄	2 ¹ / ₄	4 ¹ / ₂	19 ¹⁹ / ₆₄	6 ¹ / ₄	30.70	9,778	153.4	95
150	6	R1506D	184.2	88.8	11 ⁷ / ₁₆	17 ⁷ / ₁₆	8 ¹ / ₁₆	1 ¹ / ₄	2 ¹ / ₄	4 ¹ / ₂	19 ¹⁹ / ₆₄	6 ¹ / ₄	30.70	9,778	153.4	136
200	2	R2002D	82.6	39.2	8 ⁹ / ₆₄	10 ⁹ / ₆₄	9 ¹ / ₄	1 ⁵ / ₈	2 ⁵ / ₁₆	5 ¹ / ₄	11 ¹¹ / ₃₂	7 ¹ / ₄	41.30	9,690	206.4	136
200	6	R2006D	247.8	117.6	12 ⁹ / ₆₄	18 ⁹ / ₆₄	9 ¹ / ₄	1 ⁵ / ₈	2 ⁵ / ₁₆	5 ¹ / ₄	11 ¹¹ / ₃₂	7 ¹ / ₄	41.30	9,690	206.4	187
200	10	R20010D	413.0	196.0	16 ⁹ / ₆₄	26 ⁹ / ₆₄	9 ¹ / ₄	1 ⁵ / ₈	2 ⁵ / ₁₆	5 ¹ / ₄	11 ¹¹ / ₃₂	7 ¹ / ₄	41.30	9,690	206.4	239
280	2	R2802D	113.4	47.2	9 ¹³ / ₆₄	11 ¹³ / ₆₄	10 ⁷ / ₈	1 ⁷ / ₈	2 ³⁷ / ₆₄	6 ¹ / ₂	13 ¹³ / ₃₂	8 ¹ / ₂	56.70	9,870	283.7	219
280	6	R2806D	340.2	141.6	13 ¹³ / ₆₄	19 ¹³ / ₆₄	10 ⁷ / ₈	1 ⁷ / ₈	2 ³⁷ / ₆₄	6 ¹ / ₂	13 ¹³ / ₃₂	8 ¹ / ₂	56.70	9,870	283.7	297
280	10	R28010D	567.0	236.0	17 ¹³ / ₆₄	27 ¹³ / ₆₄	10 ⁷ / ₈	1 ⁷ / ₈	2 ³⁷ / ₆₄	6 ¹ / ₂	13 ¹³ / ₃₂	8 ¹ / ₂	56.70	9,870	283.7	376
355	2	R3552D	141.8	47.4	11 ³ / ₈	13 ³ / ₈	11 ³ / ₄	2 ¹ / ₈	2 ³ / ₄	7 ³ / ₄	7 ⁷ / ₁₆	9 ¹ / ₂	70.90	10,017	354.4	324
355	6	R3556D	425.4	142.2	15 ³ / ₈	21 ³ / ₈	11 ³ / ₄	2 ¹ / ₈	2 ³ / ₄	7 ³ / ₄	7 ⁷ / ₁₆	9 ¹ / ₂	70.90	10,017	354.4	421
430	2	R4302D	173.2	59.6	12 ⁵ / ₁₆	14 ⁵ / ₁₆	13	2 ¹ / ₂	2 ⁶¹ / ₆₄	8 ¹ / ₂	15 ¹⁵ / ₃₂	10 ¹ / ₂	86.60	9,932	433.0	439
430	6	R4306D	519.6	178.8	16 ⁵ / ₁₆	22 ⁵ / ₁₆	13	2 ¹ / ₂	2 ⁶¹ / ₆₄	8 ¹ / ₂	15 ¹⁵ / ₃₂	10 ¹ / ₂	86.60	9,932	433.0	558
430	10	R43010D	866.0	298.0	20 ⁵ / ₁₆	30 ⁵ / ₁₆	13	2 ¹ / ₂	2 ⁶¹ / ₆₄	8 ¹ / ₂	15 ¹⁵ / ₃₂	10 ¹ / ₂	86.60	9,932	433.0	673
565	2	R5652D	226.2	76.8	13 ¹⁹ / ₃₂	15 ¹⁹ / ₃₂	14 ⁷ / ₈	2 ³ / ₄	3 ¹³ / ₆₄	9 ³ / ₄	35 ³⁵ / ₆₄	12	113.10	9,991	565.5	619
565	6	R5656D	678.6	230.4	17 ¹⁹ / ₃₂	23 ¹⁹ / ₃₂	14 ⁷ / ₈	2 ³ / ₄	3 ¹³ / ₆₄	9 ³ / ₄	35 ³⁵ / ₆₄	12	113.10	9,991	565.5	772
565	10	R56510D	1131.0	384.0	21 ¹⁹ / ₃₂	31 ¹⁹ / ₃₂	14 ⁷ / ₈	2 ³ / ₄	3 ¹³ / ₆₄	9 ³ / ₄	35 ³⁵ / ₆₄	12	113.10	9,991	565.5	926