

Air Hydraulic Pumps

6 cu. in./min., Single-Acting (PA6 Series)

Single-speed pump designed to drive single-acting cylinders or tools. Pump can easily be operated by hand or foot. Generally recommended for tools and cylinders up to 15 ton.



Hoses, Fittings & Gauges
Pages
74-80



Pump Accessories
Pages
161-165



Cylinder/Pump Speed/Selection Chart Page
178



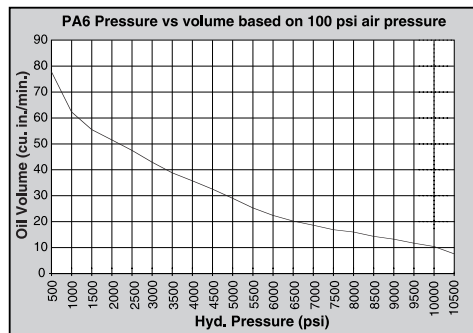
Choosing The Right Pump
Pages
181-184



- Single-speed pumps designed to drive single-acting cylinders, are compact, lightweight and portable.
- A quarter century record of proven reliability. The power unit of choice for major manufacturers of auto body, frame straighteners and other equipment.
- Operate at 40-100 psi shop air pressure at the pump.
- Internal relief valves protect circuit components, air inlet filter protects motor.

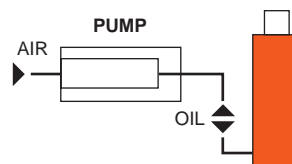
- All metal air motor, ductile iron pump. Serviceable pump motor is not a "throw away", providing economical repair.
- Permanently vented reservoir cap.
- An inexpensive alternative to using manually operated pumps.
- Metal reservoir conversion kits and filters/regulators/lubricators found in accessories section. See pages 161-165.
- dBA 85 at 10,000 psi for all PA6 Series pumps.

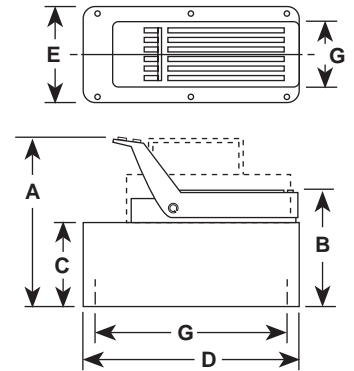
PERFORMANCE



Typical Set-up

Hook-up for single-acting cylinders





DIMENSIONS (INCHES)

Pump No.	A	B	C	D	E	G
PA6	7 $\frac{1}{4}$	5 $\frac{1}{2}$	4 $\frac{1}{2}$	9 $\frac{1}{2}$	5	4 x 9
PA6A	7 $\frac{1}{4}$	5 $\frac{1}{2}$	4 $\frac{1}{2}$	9 $\frac{1}{2}$	5	4 x 9
PA6AM	7 $\frac{1}{4}$	5 $\frac{1}{2}$	4 $\frac{1}{2}$	9 $\frac{1}{2}$	5	4 x 9
PA6M	7 $\frac{1}{4}$	5 $\frac{1}{2}$	4 $\frac{1}{2}$	9 $\frac{1}{2}$	5	4 x 9
PA6R	7 $\frac{1}{4}$	5 $\frac{1}{2}$	4 $\frac{1}{2}$	9 $\frac{1}{2}$	5	4 x 9
PA6RM	7 $\frac{1}{4}$	5 $\frac{1}{2}$	4 $\frac{1}{2}$	9 $\frac{1}{2}$	5	4 x 9
PA6M-1	7 $\frac{1}{4}$	6	4 $\frac{1}{2}$	12 $\frac{1}{2}$	7 $\frac{1}{4}$	none
PA6AM-2	10	7 $\frac{1}{4}$	6 $\frac{1}{4}$	11 $\frac{1}{2}$	9 $\frac{1}{2}$	8 x 10
PA6-2	10 $\frac{1}{4}$	8	7	11 $\frac{1}{2}$	9 $\frac{1}{2}$	5 $\frac{1}{2}$ x 7 $\frac{1}{2}$

ORDERING INFORMATION

See current price list for shipping weights.

Description	Order No.	Air Supply Req'd (psi)	Reservoir (cu. in.)		Oil Port	Prod. Wt. (lbs.)
			Cap.	Usable		
Base model pump with high density polyethylene reservoir.	PA6	40-120	105	98	$\frac{3}{8}$ " NPTF	14
PA6 with externally adjustable relief valve.	PA6A	40-120	105	98	$\frac{3}{8}$ " NPTF	15
PA6A with metal reservoir.	PA6AM	40-120	105	98	$\frac{3}{8}$ " NPTF	17
PA6, except has metal reservoir.	PA6M	40-120	105	98	$\frac{3}{8}$ " NPTF	18
PA6 with 12 foot remote control.	PA6R	40-120	105	98	$\frac{3}{8}$ " NPTF	20.58
PA6R except has metal reservoir.	PA6RM	40-120	105	98	$\frac{3}{8}$ " NPTF	21.58
PA6, except has 1 gallon metal reservoir.	PA6M-1	40-120	1 gal.	185	$\frac{3}{8}$ " NPTF	23.7
PA6, except has 2 gallon, high density polyethylene reservoir.	PA6-2	40-120	2 gal.	454	$\frac{3}{8}$ " NPTF	24.5
PA6, except has 2 $\frac{1}{2}$ gallon metal reservoir.	PA6M-2	40-120	2 $\frac{1}{2}$ gal.	570	$\frac{3}{8}$ " NPTF	32.1