

# Air Hydraulic Pumps

28 cu. in./min. — “low pressure” (PA50 Series)

Designed to operate low pressure (3200 psi) systems, single-speed.  
Pump models available to drive single-acting or single- and double-acting systems.

PUMPS



Hoses, Fittings & Gauges  
Pages 74-80

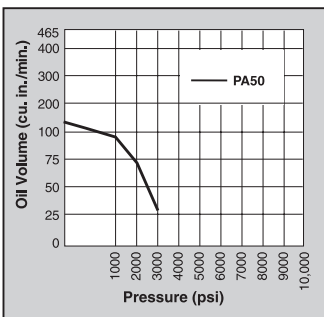
Pump Accessories  
Pages 161-165

Cylinder/Pump Speed/Selection  
Chart Page 178

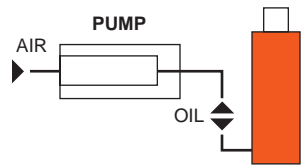
Choosing The Right Pump  
Pages 181-184

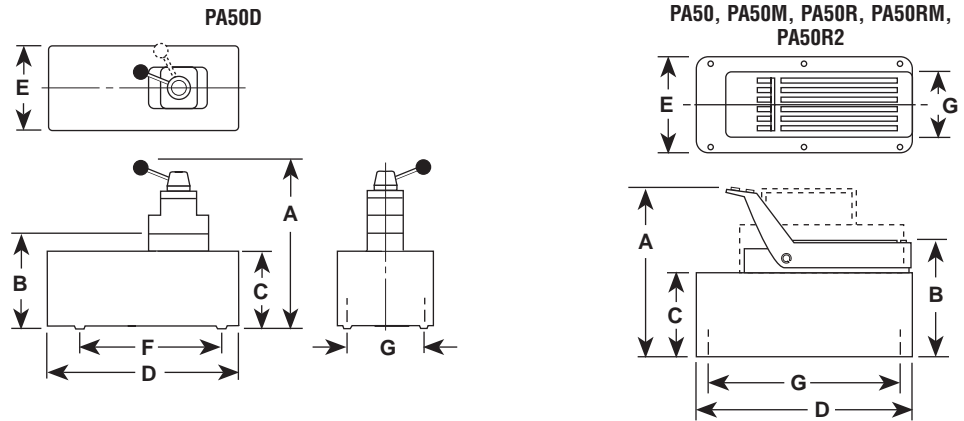
- Single-speed, low pressure (3,200 psi) output pumps.
- All metal air motor for long dependable service.
- Serviceable air motor (not a throw away) for economical repair.
- Air inlet filter protects motor. Filter in outlet port protects against contaminated systems.
- Standard or large reservoirs to suit your application's oil requirements.

## PERFORMANCE



Typical Set-up  
Hook-up for single-acting cylinders





## SPECIFICATIONS AND DIMENSIONS

Pump No.	Dimensions (in.)							Max. Pressure Output (psi)	Oil Del.* (cu. in./min. @)				
	A	B	C	D	E	F	G		0 psi	100 psi	1,000 psi	5,000 psi	10,000 psi
PA50, PA50R, PA50M, PA50RM	7 $\frac{1}{4}$	5 $\frac{1}{2}$	4 $\frac{1}{2}$	9 $\frac{1}{2}$	5	–	4 x 9	3,200	128	110	88	28†	–
PA50R2	10 $\frac{1}{4}$	8	7	11 $\frac{1}{2}$	9 $\frac{1}{2}$	–	5 $\frac{1}{2}$ x 7 $\frac{1}{2}$	3,200	128	110	88	28†	–
PA50D	10 $\frac{1}{4}$	5 $\frac{1}{2}$	4 $\frac{1}{2}$	9 $\frac{1}{2}$	5	9	4	3,200	128	110	88	28†	–

\* Typical delivery. Actual flow will vary with field conditions.

† PA50 Series measured at 3,200 psi.

## ORDERING INFORMATION

Requires 20 cfm at 100 psi shop air pressure at the pump.

### SINGLE-ACTING

Description	Order No.	Valve No.	Air Supply Req'd (psi)	Reservoir (cu. in.)		Oil Port	Prod. Wt. (lbs.)
				Cap.	Usable		
Base model pump with high density polyethylene reservoir.	PA50	–	40-120	105	98	$\frac{3}{8}$ " NPTF	14.2
PA50, except has metal reservoir.	PA50M	–	40-120	105	98	$\frac{3}{8}$ " NPTF	16.2
PA50, except has 12 foot remote control.	PA50R	–	40-120	105	98	$\frac{3}{8}$ " NPTF	18.5
PA50R, except has metal reservoir.	PA50RM	–	40-120	105	98	$\frac{3}{8}$ " NPTF	20.5
PA50R, except has 2 gallon reservoir.	PA50R2	–	40-120	2 gal.	454	$\frac{3}{8}$ " NPTF	28.5

NOTE: Air inlet port  $\frac{1}{4}$ " NPTF.

### SINGLE- AND DOUBLE-ACTING

Description	Order No.	Valve No.	Air Supply Req'd (psi)	Reservoir (cu. in.)		Oil Port	Prod. Wt. (lbs.)
				Cap.	Usable		
PA50, except designed to operate either single- or double-acting systems. Valve function: Advance / Return.	PA50D	9504, 3-way/4-way	40-120	105	98	$\frac{3}{8}$ " NPTF	18.4

NOTE: Air inlet port  $\frac{1}{4}$ " NPTF.