

Air Hydraulic Pumps

46-55 cu. in./min. — Two-speed (PA46 & PA55 Series)

Two-speed pump with rotary-style air motor. Generally recommended for cylinders up to 150 ton capacity.



Hoses, Fittings & Gauges
Pages 74-80

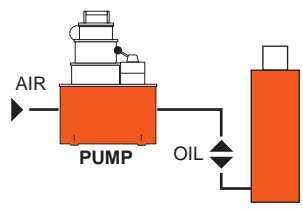
Pump Accessories
Pages 161-165

Cylinder/Pump Speed/Selection Chart
Page 178

Choosing The Right Pump
Pages 181-184

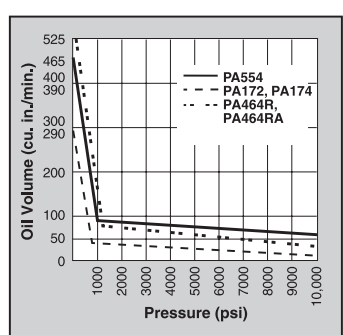
- Use where air is the preferred source of energy.
- Features 3 hp motor capable of starting under full load.
- Two-speed operation for high speed cylinder advance.
- Models available with full remote control over advance and return, except for PA554.
- Tandem center valve holds the load when pump is shut off.

Typical Set-up
Hook-up for single-acting cylinders

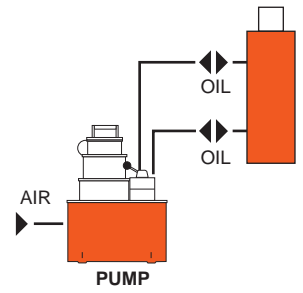


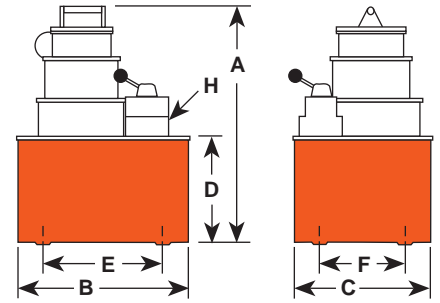
PA554 pump and RH2008 Center Hole cylinder used to tension cables.

PERFORMANCE



Typical Set-up
Hook-up for double-acting cylinders





SPECIFICATIONS AND DIMENSIONS

Pump No.	Dimensions (in.)							Max. Pressure Output (psi)	Oil Del. * (cu. in./min. @)				
	A	B	C	D	E	F	H		0 psi	100 psi	1,000 psi	5,000 psi	10,000 psi
PA462	15	11½	9½	7	10	8	¾ NPTF	10,000	465	450	53	51	46
PA464	15	11½	9½	7	10	8	¾ NPTF	10,000	465	450	53	51	46
PA464R	15	11½	9½	7	10	8	¾ NPTF	10,000	465	450	53	51	46
PA464RA	15	11½	9½	7	10	8	¾ NPTF	10,000	465	450	53	51	46
PA554	19	11½	9½	7	10	8	¾ NPTF	10,000	465	450	80	70	55

* Typical delivery. Actual flow will vary with field conditions.

NOTE: Four mounting holes ½ in.-20.

ORDERING INFORMATION

Requires 50 cfm at 80 psi shop air pressure at the pump. dBA 85/90 at 10,000 psi.

SINGLE-ACTING

Description	Order No.	Valve No.	Valve Function	Air Supply Req'd (psi)	Reservoir (cu. in.)		Prod. Wt. (lbs.)
					Cap.	Usable	
Base model pump with 2½ gallon steel reservoir.	PA462	9584, 2-way	Advance / Hold / Return	40-120	2½ gal.	590	60

SINGLE- & DOUBLE-ACTING

Description	Order No.	Valve No.	Valve Function	Air Supply Req'd (psi)	Reservoir (cu. in.)		Prod. Wt. (lbs.)
					Cap.	Usable	
PA462, except has 9500 valve capable of running 2 single-acting cylinders or one double-acting cylinder.	PA464	9500, 4-way	Advance / Hold / Return*	40-120	2½ gal.	590	61
PA462 with air actuated valve for full remote control over advance and return. Includes 12 ft. remote control.	PA464R†	9594 4-way	Advance / Hold / Return	40-120	2½ gal.	590	78
PA464R except, has automatic dump feature. 25 ft. remote control.	PA464RA∞†	9594, 4-way	Advance / Hold / Return*	40-120	2½ gal.	590	79
High performance pump with 2½ gallon steel reservoir.	PA554	9500, 4-way	Advance / Hold / Return*	40-120	2½ gal.	525	49

* Holds when motor is shut-off and valve is in "advance" position.

† The PA464RA has an "automatic dump" feature. Pressure is **not** held when operator releases "advance" or "return" button. PA464R will "hold" only in the "advance" position with the motor shut off.

∞ Not to be used for lifting.