

**SIMPLEX**<sup>®</sup>  
A Division Of Templeton, Kenly & Co., Inc.

**ALUMINUM CYLINDERS**

**RAS & RAL  
SERIES**

**SILVER LITE**

**NEW!!**

• **The Toughest** Hard anodized housing & pistons stand up to harshest environments.

• **The Fastest** Heavy duty spring return for fast & full retraction.

• **The Most Ergonomic**  
Easy to carry, transport and position.



• **The Lightest**  
Aluminum alloy construction makes these cylinders 60% lighter than steel cylinders.

**CUSTOM TONNAGES AND STROKES AVAILABLE UPON REQUEST.**



**SIMPLEX**<sup>®</sup>

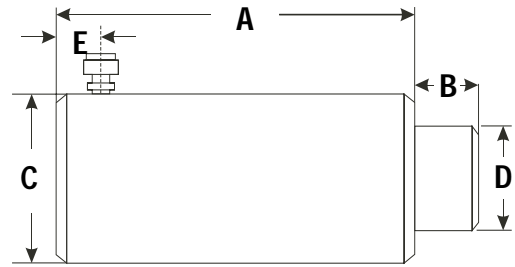
**HYDRAULIC & MECHANICAL POWER**

2525 Gardner Road • Broadview, IL 60155 • Phone: (708) 865-1500 • Fax: (708) 865-0894 • [www.tksimplex.com](http://www.tksimplex.com)

# LIGHT WEIGHT / HEAVY DUTY / HIGH PERFORMANCE

## SIMPLEX RAS-SERIES SILVER LITE CYLINDERS

- 13 Standard Models from 30 through 150 tons.
- Up to 60% lighter than steel cylinders.
- High flow quality couplers.
- Carry handles standard on all models.
- Large bearing surfaces for side load protection.
- Hard anodized housing & piston reduce wear & corrosion.
- Heavy duty spring for fast & full retraction.
- Rod wiper protects inner cylinder from dirt.
- Complies with ANSI/ASME B30.1 safety standards.



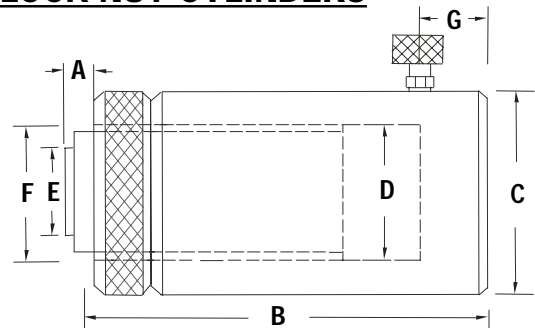
### Aluminum Spring Return Cylinders 30 Through 150 Ton Capacities

Model Number	Cap. (tons)	Stroke (in)	A Min. Ht. (in)	B Ext. Ht. (in)	Effect Area (sq in)	Oil Cap. Req'd (cu in)	C Body O.D. (in)	D Piston O.D. (in)	E Base To Port C/L (in)	Weight (lbs)	Sugstd. Hand Pumps
RAS302B	30	2	6.5	8.5	6.5	13	4.5	2.5	1.5	14	P42/P72
RAS306B		6	10.5	16.5		39				18	P72/P82
RAS502B	50	2	6.5	8.5	11	22.1	5.5	3.12	1.5	13	P72/P82
RAS504B		4	8.5	12.5		44.2				17	P72/P82
RAS506B		6	10.5	16.5		66.2				28	P140
RAS5010B		10	14.5	24.5		110.4				36	*
RAS1002B	100	2	6.5	8.5	20.7	41.2	7.5	4.25	1.5	40	P72/P82
RAS1004B		4	8.5	12.5		82.4				45	P140
RAS1006B		6	10.5	16.5		123.7				50	*
RAS10010B		10	14.5	24.5		206				68	*
RAS1502B	150	2	6.5	8.5	30.7	61.4	10	5	1.5	58	P140
RAS1506B		6	10.5	16.5		184.1				86	*
RAS15010B		10	14.5	24.5		306.8				110	*

\*Power pumps are suggested for these units

## SIMPLEX RAL-SERIES SILVER LITE LOCK NUT CYLINDERS

- 11 standard models from 50 through 150 tons.
- Heat treated steel load caps.
- Hard anodized housing & piston reduce wear & corrosion.
- Stop ring for piston blow-out protection.
- Heavy duty spring for fast & full retraction.
- Carry handles standard on all models.
- High flow quality couplers.
- Complies with ANSI/ASME B30.1 safety standards.



### Aluminum Lock Nut Spring Return Cylinders 50 Through 150 Ton Capacities

Model Number	Cap. (tons)	A Stroke (in)	B Min. Ht. (in)	Ext. Ht. (in)	Effect Area (sq in)	Oil Cap. Req'd (cu in)	C Body O.D. (in)	D Cyl. Bore Dia. (in)	E Saddle Dia. (in)	F Piston O.D. (in)	G Base To Port C/L (in)	Weight (lbs)	Sugstd. Hand Pumps
RAL502	50	2	6.70	8.70	11.04	21.65	5	5	5	3.748	1.25	22	P42/P72
RAL504		4	8.70	12.70		43.30						38	P72/P82
RAL506		6	10.70	16.70		64.92						32	P72/P82
RAL5010		10	14.70	24.70		108.20						40	P140
RAL1002	100	2	7.70	9.70	20.68	40.51	6.5	6.5	6.5	5.123	1.25	45	P72/P82
RAL1004		4	9.70	13.70		81.00						55	P82
RAL1006		6	11.70	17.70		121.50						64	P140
RAL10010		10	15.70	25.70		202.50						82	*
RAL1502	150	2	8.45	10.45	30.68	60.60	8	8	6.248	6.248	1.5	65	P140
RAL1506		6	12.45	18.45		181.80						101	*
RAL15010		10	16.45	26.45		303.00						156	*

\*Power pumps are suggested for these units

**FOR A FREE CATALOG ON THESE AND OTHER SIMPLEX PRODUCTS CALL TOLL FREE: (800) 323-9114  
FAX: (708) 865-0894 • EMAIL: sales@tksimplex.net**