

▼ Shown from left to right: P-84, P-80, P-462, P-39



- Two-speed operation for reduced operator fatigue (except P-39)
- 4-way valving on the P-84 and P-464 for operation of double-acting cylinders
- External load release valve on remaining models for single-acting cylinder operation
- Internal pressure relief valve for overload protection
- Large oil capacity to power a wide range of cylinders or tools

▼ In the absence of a power supply, the P-80 Hand Pump offers a powerful solution.



## The Solution for Tough Jobs



### Two Speed

Recommended for applications where cylinder plunger must advance rapidly to contact load, and applications where greater oil capacities are required, such as multiple cylinder hook-ups.



### Foot Pump Conversion Kits

Convert your P-39 to foot power with the PC-10 Kit. Includes instructions for easy conversion.



### Gauges

Minimize the risk of overloading and ensure long, dependable service from your equipment. Refer to the

System Components section for a full range of gauges.

Page: 118



### 4-Way Control Valve

P-84 and P-464 feature a manual 4-way control valve, designed for use with one double-acting or two single-acting cylinders. For system set-up information:

Page: 104

Pump Type	Usable Oil Capacity (in <sup>3</sup> )	Model Number	Pressure Rating*		Oil Displacement per Stroke		Max. Handle Effort (lbs)
			(psi)		(in <sup>3</sup> )		
			1 <sup>st</sup> stage	2 <sup>nd</sup> stage	1 <sup>st</sup> stage	2 <sup>nd</sup> stage	
Single	40	P-39	N/C	10,000	N/C	.16	111
Two-Speed	134	P-80**	350	10,000	.99	.15	104
	249	P-801	350	10,000	.99	.15	104
	134	P-84***	350	10,000	.99	.15	104
	453	P-462**	200	10,000	7.69	.29	110
	453	P-464***	200	10,000	7.69	.29	110

\* Contact Enerpac for applications where operating pressure is less than 10% of pressure rating.

\*\* Available as a set, see note on next page.

\*\*\* For use with double-acting cylinders.

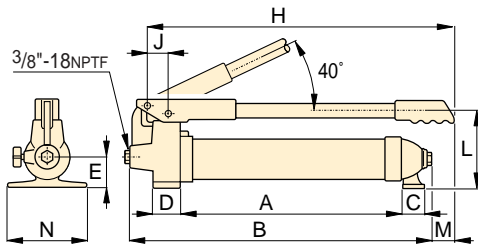
## P Series



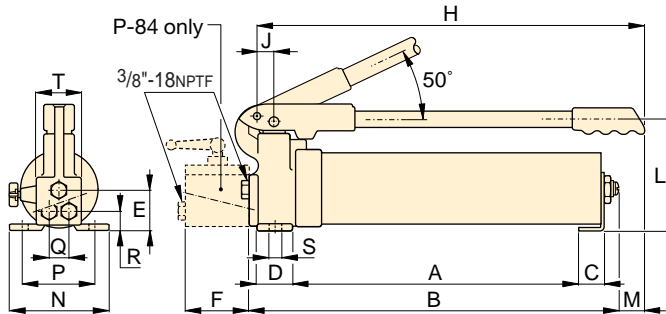
Reservoir Capacity:  
**40-453 in<sup>3</sup>**

Flow at Rated Pressure:  
**.15 -.29 in<sup>3</sup>/stroke**

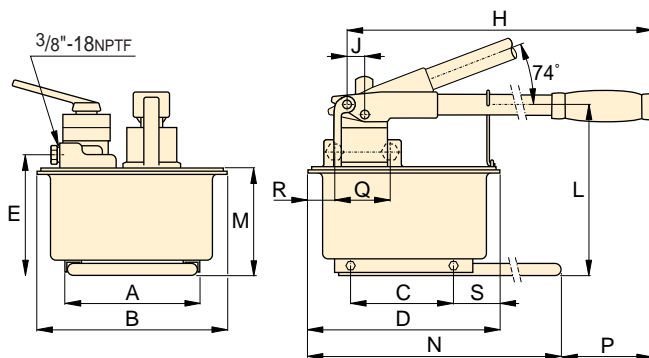
Maximum Operating Pressure:  
**10,000 psi**



P-39



P-80, P-801, P-84



P-462, P-464

**Pump and Cylinder sets**  
P-80 and P-462  
also available as sets  
(pump, cylinder, gauge,  
couplers and hose) for your  
ordering convenience.  
*Page: 54*

**i Speed Chart**  
To determine how a specific  
pump will operate your cylinder,  
see the Pump-Cylinder Speed Chart  
in the "Yellow Pages".  
*Page: 109*

**i Cylinder Matching Chart**  
For help in selecting the correct  
hand pump for your application,  
please refer to the Cylinder Matching  
Chart located in the "Yellow Pages".  
*Page: 102*

Piston Stroke (in)	Dimensions (in)																Weight (lbs)	Model Number
	A	B	C	D	E	F	H	J	L	M	N	P	Q	R	S	T		
.81	15.5	20.47	1.28	1.50	1.25	-	18.25	1.18	4.69	2.56	5.25	-	-	-	-	-	13	P-39
1.00	16.75	21.22	1.00	1.75	2.13	-	20.75	1.14	6.88	.75	5.75	4.76	-	.83	.31	-	24	P-80**
1.00	25.94	30.78	1.00	1.75	2.13	-	30.43	1.14	6.88	-	5.75	4.76	-	.83	.31	-	31	P-801
1.00	16.75	21.22	1.00	1.75	-	2.52	20.75	1.14	6.88	.75	5.75	4.76	1.50	1.69	.31	2.64	29	P-84***
1.50	8.25	12.13	6.42	12.63	7.68	-	26.44	.98	10.63	6.89	25.6	3.63	-	-	3.13	-	61	P-462**
1.50	8.35	12.13	6.42	12.63	7.68	-	26.44	.98	10.63	6.89	25.6	3.63	3.50	2.68	3.13	-	61	P-464***