

MS-Series, Cylinder Accessories



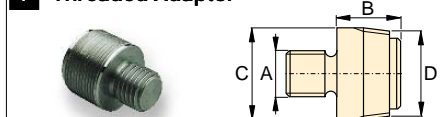
CAUTION! When cylinders are used with maintenance set attachments or components, the maximum system pressure must be limited to half the rated pressure (5,000 psi).

Note: All dimensions in inches.

Set Model Number	MS2-4	MSFP-5	MSFP-10	MS2-10	MS2-20	MS2-1020
Base/Collar/Plunger Attachments	Capacity Using Attachments					
	2.5 tons	2.5 tons	5.0 tons	5.0 tons	12.5 tons	5-12.5 tons
Cylinder Series	RC-5	RC-5	RC-10	RC-10	RC-25	RC-10, RC-25
1	A-23	A-23	A-13	A-13	A-28	A-13 / A-28
2	A-25	A-25	A-21	A-21	A-27	A-21 / A-27
3	A-1034	A-1034	A-20	A-20	A-595	A-20 / A-595
4	MZ-4010	MZ-4010	A-14	A-14	A-243	A-14 / A-243
5	A-545	A-545	A-10	A-10	—	A-10(2x)
6	—	—	—	A-8	—	A-8
7	A-530	A-530	A-6	A-6	—	A-6
8	MZ-4011	—	—	A-192	—	A-192
9	—	—	—	A-305	—	A-305
10	A-531	A-531	A-18	A-18	—	A-18
11	—	—	—	A-185	—	A-185
12	A-532	A-532	A-15	A-15	—	A-15
13	—	—	—	—	A-607	A-607
14	A-629	A-629	A-129	A-129	—	A-129
15	A-539	A-539	A-128	A-128	—	A-128
Chains and Attachments for Pulling	2.5 tons	2.5 tons	5.0 tons	5.0 tons	12.5 tons	5-12.5 tons
Cylinder Series	RC-5	RC-5	RC-10	RC-10	RC-25	RC-10, RC-25
16	A-558	—	—	A-132	A-238	A-132, -238
17	—	—	—	A-5 (2x)	—	A-5(2x)
18	A-557(2x)	—	—	A-141(2x)	A-218(2x)	A-141(2x) / A-218(2x)
Tubes, Connectors and Adaptors	2.5 tons	2.5 tons	5.0 tons	5.0 tons	12.5 tons	5-12.5 tons
Cylinder Series	RC-5	RC-5	RC-10	RC-10	RC-25	RC-10, RC-25
19	A-544	—	—	A-19(2x)	A-242(2x)	A-19(2x) / A-242(2x)
20	WR-5	WR-5	WR-5	A-92	—	A-92
21	MZ-4013(4x)	MZ-4013(4x)	A-16(4x)	A-16(4x)	—	A-16(4x)
22	MZ-4007(3x)	MZ-4007(3x)	MZ-1050(2x)	MZ-1050(2x)	—	MZ-1050(3x)
23	MZ-4008(2x)	—	—	MZ-1051	—	MZ-1051(2x)
24	MZ-4009	MZ-4009	MZ-1052	MZ-1052	—	MZ-1052
25	—	—	—	A-285	—	A-285
26	A-650	—	—	—	—	—
27 Length: 3"	MZ-4002	MZ-4002	—	—	—	—
5"	MZ-4003	MZ-4003	MZ-1002	MZ-1002	—	MZ-1002
10"	MZ-4004	MZ-4004	MZ-1003	MZ-1003	A-239	MZ-1003 and A-239
18"	MZ-4005(2x)	MZ-4005	MZ-1004	MZ-1004	A-240	MZ-1004(2x) and A-240
23"	MZ-4006(2x)	MZ-4006	—	—	—	—
30"	—	—	MZ-1005	MZ-1005	A-241	MZ-1005(2x) and A-241
28 Case	CM-6	CM-6	CW-166	CW-166	CW-166	CW-350
Weight	59 lbs	44 lbs	105 lbs	140 lbs	210 lbs	350 lbs

Base/Collar/Plunger Attachments

1 Threaded Adaptor



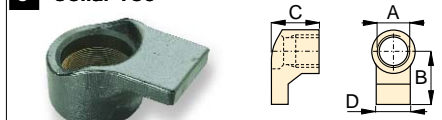
tons	Model No.	A	B	C	D
2.5	A-23	3/4"-16 UN	1.13	1.05	3/4"-14 NPTF
5.0	A-13	1"-8 UN	1.25	2.19	1 1/4"-11 1/2 NPTF
12.5	A-28	1 1/2"-16 UN	1.87	2.75	2"-11 1/2 NPTF

2 Base Attachment (incl. mounting screws)



tons	Model No.	A	B	C	D
2.5	A-25	3/4"-14 NPTF	2.00	.50	1.75
5.0	A-21	1 1/4"-11 1/2 NPTF	2.25	.50	2.56
12.5	A-27	2"-11 1/2 NPTF	2.50	.50	3.88

3 Collar Toe



tons	Model No.	A	B	C	D
2.5	A-1034	1 1/2"-16 UN	2.13	1.97	1.25
5.0	A-20	2 1/4"-14 UN	3.16	2.25	2.25
12.5	A-595	3 5/16"-12 UN	4.06	2.03	3.18

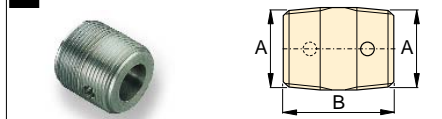
4 Flat Base



tons	Model No.	A	B	C	D
2.5	MZ-4010	3/4"-14 NPTF	4.50	1.25	2.50
5.0	A-14	1 1/4"-11 1/2 NPTF	6.50	1.38	3.50
12.5	A-243*	2"-11 1/2 NPTF	6.50	2.31	6.50

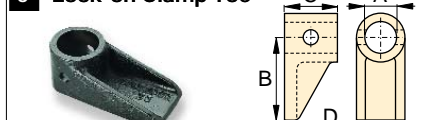
* A-243 is a round base model

5 Threaded Connector



tons	Model No.	A	B
2.5	A-545	3/4"-14 NPTF	1.38
5.0	A-10	1 1/4"-11 1/2 NPTF	1.63

6 Lock-on Clamp Toe



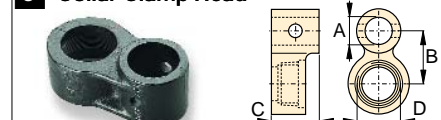
tons	Model No.	A	B	C	D
5.0	A-8	1.69	4.13	2.00	2.25

7 Threaded Plunger Toe



tons	Model No.	A	B	C	D
2.5	A-530	3/4"-14 NPTF	2.25	1.00	1.33
5.0	A-6	1 1/4"-11 1/2 NPTF	1.13	1.25	2.25

8 Collar Clamp Head



tons	Model No.	A	B	C	D
2.5	MZ-4011	3/4"-14 NPTF	1.95	3.00	1 1/2"-16 UN
5.0	A-192	1.69	2.50	2.00	2 1/4"-14 UN

9 Spreader Toe



tons	Model No.	A	B	C	D
5.0	A-305	1 1/4"-11 1/2 NPTF	4.50	1.00	2.00

10 Serrated Saddle



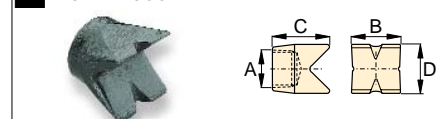
tons	Model No.	A	C	D
2.5	A-531	3/4"-14 NPTF	1.09	1.25
5.0	A-18	1 1/4"-11 1/2 NPTF	1.50	2.00

11 Smooth Saddle



tons	Model No.	A	B	C
5.0	A-185	1 1/4"-11 1/2 NPTF	1.50	2.00

12 90° V-Base



tons	Model No.	A	B	C	D
2.5	A-532	3/4"-14 NPTF	1.50	1.88	1.00
5.0	A-15	1 1/4"-11 1/2 NPTF	2.13	2.25	2.13

13 Plunger Base



tons	Model No.	A	B	C
12.5	A-607	2"-11 1/2 NPTF	6.56	1.53

14 Wedge Head



t	Model No.	A	B	C	D
2.5	A-629	3/4"-14 NPTF	2.75	1.31	1.13
5.0	A-129	1 1/4"-11 1/2 NPTF	4.00	2.00	1.75

15 Rubber Flex-Head



tons	Model No.	A	B	C
2.5	A-539	3/4"-14 NPTF	1.75	2.75
5.0	A-125	1 1/4"-11 1/2 NPTF	3.40	3.40

Chains and Attachments for Pulling

16 Single Chain Plate



tons	Model No.	A	B	C	D
2.5	A-558	1 1/2"-16 UN	7.75	1.56	1.75
5.0	A-132	2 1/4"-14 UN	12.12	2.50	3.12
12.5	A-238	3 5/16"-12 UN	17.75	4.03	4.93

17 Double Chain Plate



tons	Model No.	A	B	C	D
5.0	A-5	1 1/4"-11 1/2 NPTF	5.12	2.00	4.96

18 Chain with Hook



tons	Model No.	Chain Length
2.5	A-557	5 feet
5.0	A-141	6 feet
12.5	A-218	8 feet

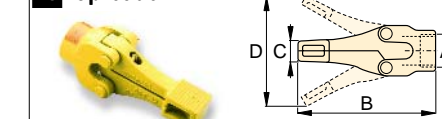
Tubes, Connectors and Adaptors

19 Pipe Coupling



tons	Model No.	A	B	C
2.5	A-544	3/4"-14 NPTF	1.69	1.31
5.0	A-19	1 1/4"-11 1/2 NPTF	1.94	2.15
12.5	A-242	2"-11 1/2 NPTF	3.50	3.25

20 Spreader



tons	Model No.	A	B	C	D
1.0	WR-5	—	8.78	.38	3.70
1.0	A-92	2 1/4"-14 UN	9.63	1.38	6.25

21 Lock Pin



tons	Model No.	A	B
2.5	MZ-4013	.25	2.38
5.0	A-16	.44	3.25

22 Lock-on Connector



tons	Model No.	A	B
2.5	MZ-4007	.75	3.12
5.0	MZ-1050	1.31	5.00

23 Male Lock-on Adaptor



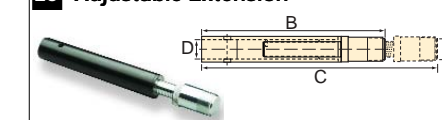
tons	Model No.	A	B	C
2.5	MZ-4008	3/4"-14 NPTF	2.38	.75
5.0	MZ-1051	1 1/4"-11 1/2 NPTF	3.56	1.31

24 Female Lock-on Adaptor



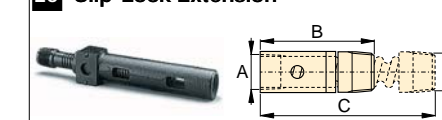
tons	Model No.	A	B	C
2.5	MZ-4009	3/4"-14 NPTF	2.56	.75
5.0	MZ-1052	1 1/4"-11 1/2 NPTF	3.81	1.31

25 Adjustable Extension



tons	Model No.	A	B	C	D
5.0	A-285	1 1/4"-11 1/2 NPTF	13.20	17.37	1.30

26 Slip-Lock Extension



tons	Model No.	A	B	C
2.5	A-650	3/4"-14 NPTF	7.88	14.37